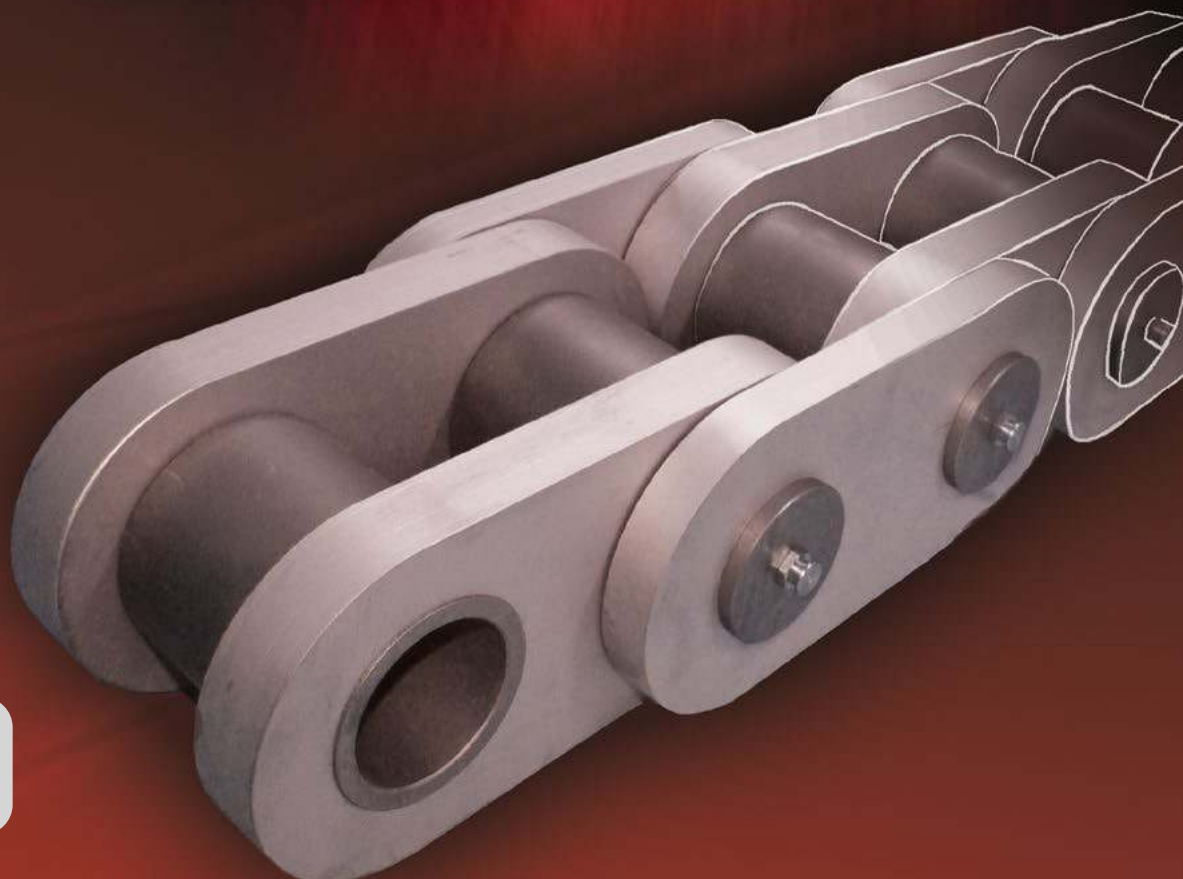


**sedis** 

# **NOUVEAUTES MANUTENTION**

***New Conveyor Offering***

# **2013**



Recommandé par

**MICHAUD CHAILLY**

[www.michaud-chailly.fr](http://www.michaud-chailly.fr)

► N° Indigo 0 825 002 555

020 4710 100

○ **DIAGNOSTIC**  
*Application Analysis*

○ **FORMATION**  
*Training*

○ **PRE-ETUDE**  
*Assessment Study*

○ **PRECONISATION**  
*Recommendation*

Recommandé par

**MICHAUD CHAILLY**

[www.michaud-chailly.fr](http://www.michaud-chailly.fr)

○ N° Indigo 0 825 002 555

03/07/1984

# SOMMAIRE

## Contents

**CHAINES DE MANUTENTION TYPE FV**  
*FV Conveyor Chains*

**P 4**

**CHAINES TYPE FV A PLAQUES DEPORTEES**  
*Deep Link FV Conveyor Chains*

**P 5**

**CHAINES TYPE FV A AXES CREUX**  
*Hollow Pin FV Conveyor Chains*

**P 6**

**CHAINES TYPE FV A AXES CREUX & PLAQUES DEPORTEES**  
*Hollow Pin & Deep Link FV Conveyor Chains*

**P 7**

**CHAINES DE MANUTENTION TYPE ISO**  
*ISO Conveyor Chains*

**P 8**

**CHAINES TYPE ISO A PLAQUES DEPORTEES**  
*Deep Link ISO Conveyor Chains*

**P 9**

**CHAINES TYPE ISO A AXES CREUX**  
*Hollow Pin ISO Conveyor Chains*

**P 10**

**CHAINES TYPE ISO A AXES CREUX & PLAQUES DEPORTEES**  
*Hollow Pin & Deep Link ISO Conveyor Chains*

**P 11**

**NOTES**  
*Notes*

**P 12**

Recommandé par

**MICHAUD CHAILLY®**

[www.michaud-chailly.fr](http://www.michaud-chailly.fr)

☎ N° Indigo 0 825 002 555

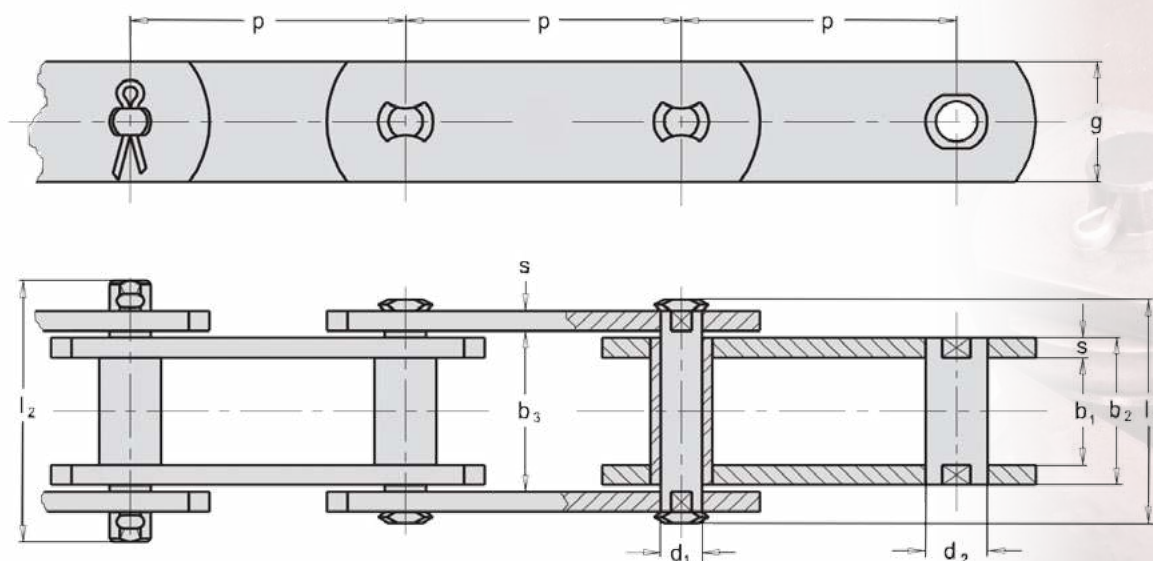
03/2017

# CHAINES DE MANUTENTION TYPE FV

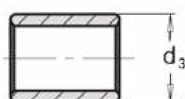
## FV Conveyor Chains

DIN 8165

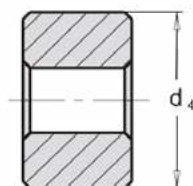
Plan d'une chaîne à douilles Type B  
Drawing of a bush chain Type B



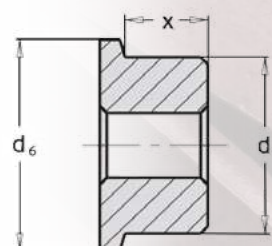
### Rouleaux Rollers



**TYPE S**  
rouleau  
small roller



**TYPE P**  
galet lisse  
plain roller



**TYPE F**  
galet épaulé  
flanged roller

Type 1*	Type 2*	p mm								b1	b2	b3	d1	d2	d3	d4	d5	d6	x	l1	l2	g	s	Rr/Bl
		50	63	80	100	125	160	200	250	315	min	max	min	mm	mm	mm	mm	mm	mm	mm	max	max	mm	mm
FV 63	FVS 63	50	63	80	100	125	160	200	-	22	30,5	31,0	12	18	26	40	50	60	15,5	46	55	30	4	63
FV 90	FVS 90	50	63	80	100	125	160	200	250	25	35,5	36,0	14	20	30	48	63	73	18,5	53	62	35	5	90
FV 112	FVS 112	80	100	125	160	200	250	315	-	30	42,5	43,0	16	22	32	55	72	87	22,0	63	72	40	6	112
FV 140	FVS 140	80	100	125	160	200	250	315	400	35	47,5	48,0	18	26	36	60	80	95	26,0	68	80	45	6	140
FV 180	FVS 180	-	100	125	160	200	250	315	400	45	61,5	62,5	20	30	42	70	100	120	35,0	86	100	50	8	180
FV 250	FVS 250	-	-	125	160	200	250	315	400	55	72,0	73,0	26	36	50	80	125	145	42,0	98	114	60	8	250
FV 315	FVS 315	-	-	125	160	200	250	315	400	65	86,0	87,0	30	42	60	90	140	170	50,0	117	133	70	10	315
FV 400	FVS 400	-	-	-	160	200	250	315	400	70	96,0	97,0	32	44	60	100	150	185	54,0	131	141	70	12	400
FV 500	FVS 500	-	-	160	200	250	315	400	500	80	106	107	36	50	70	110	160	195	60,0	141	151	80	12	500
FV 630	FVS 630	-	-	-	200	250	315	400	500	90	116	117	42	56	80	120	170	210	66,0	153	163	100	12	630

\* TYPE 1: Chaînes axes et douilles méplatés gamme série bois

\* TYPE 1: Chains with flattened pins and bushes - wood industry

\* TYPE 2: Chaînes axes et douilles méplatés soudés gamme série bois

\* TYPE 2: Chains with flattened and welded pins and bushes - wood industry

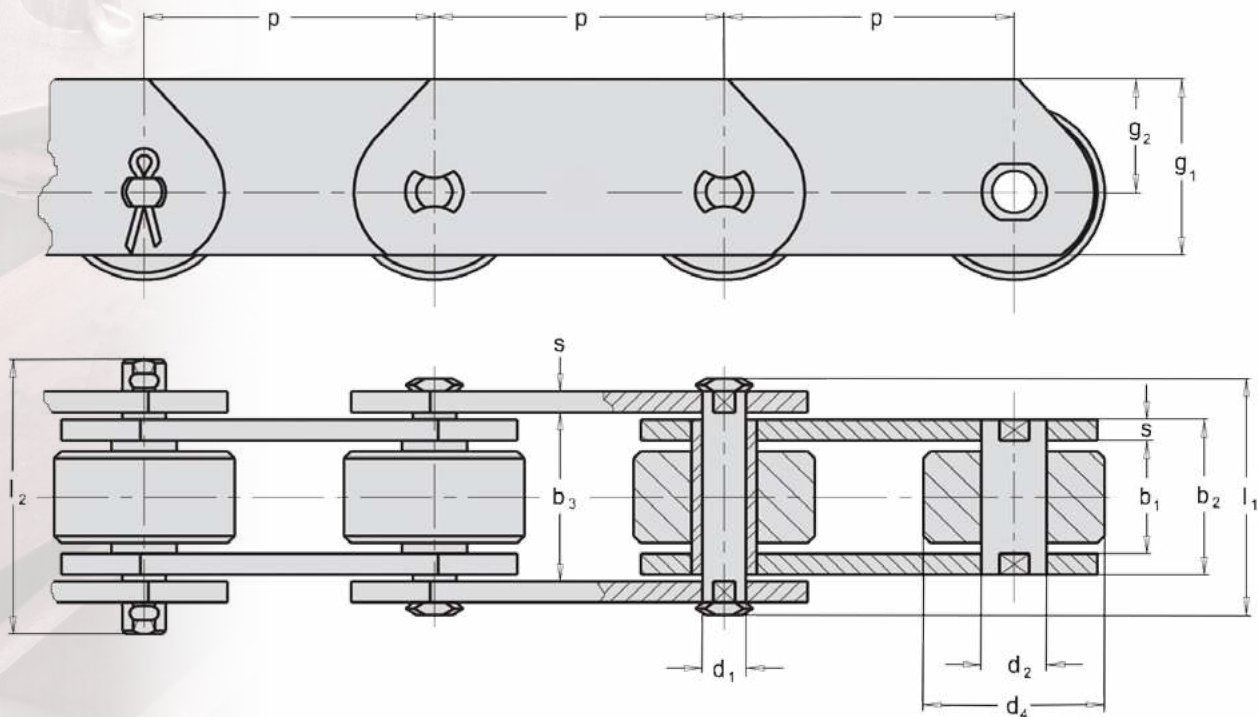
# CHAINES TYPE FV A PLAQUES DEPORTEES

## Deep Link FV Conveyor Chains

DIN 8165

Plan d'une chaîne à galets lisses Type P

Drawing of a plain roller chain Type P



Type 1 *	Type 2*	p								b1 mm	b2 mm	b3 mm	d1 mm	d2 mm	d4 mm	g1 mm	g2 mm	s mm	l1 mm	l2 mm	Rr/Bl kN
		40	50	63	80	100	125	160	200												
FV 40/D	FVS 40/D	40	50	63	80	100	125	160	-	18	24,5	25,0	10	15	32	35	22,0	3	37	44	40
FV 63/D	FVS 63/D	50	63	80	100	125	160	200	-	22	30,5	31,0	12	18	40	40	25,0	4	46	55	63
FV 90/D	FVS 90/D	50	63	80	100	125	160	200	250	25	35,5	36,0	14	20	48	45	27,5	5	53	62	90
FV 112/D	FVS 112/D	80	100	125	160	200	250	315	-	30	42,5	43,0	16	22	55	50	30,0	6	63	72	112
FV 140/D	FVS 140/D	80	100	125	160	200	250	315	400	35	47,5	48,0	18	26	60	60	37,5	6	68	80	140
FV 180/D	FVS 180/D	-	100	125	160	200	250	315	400	45	61,5	62,5	20	30	70	70	45,0	8	86	100	180
FV 250/D	FVS 250/D	-	-	125	160	200	250	315	400	55	72,0	73,0	26	36	80	80	50,0	8	98	114	250
FV 315/D	FVS 315/D	-	-	125	160	200	250	315	400	65	86,0	87,0	30	42	90	90	55,0	10	117	133	315
FV 400/D	FVS 400/D	-	-	-	160	200	250	315	400	70	96,0	97,0	32	44	100	90	55,0	12	131	141	400
FV 500/D	FVS 500/D	-	-	160	200	250	315	400	500	80	106,0	107,0	36	50	110	100	60,0	12	141	151	500
FV 630/D	FVS 630/D	-	-	-	200	250	315	400	500	90	116,0	117,0	42	56	120	120	70,0	12	153	163	630

\* TYPE 1: Chaines axes et douilles méplatés gamme série bois

\* TYPE 1: Chains with flattened pins and bushes - wood industry

\* TYPE 2: Chaines axes et douilles méplatés soudés gamme série bois

\* TYPE 2: Chains with flattened and welded pins and bushes - wood industry

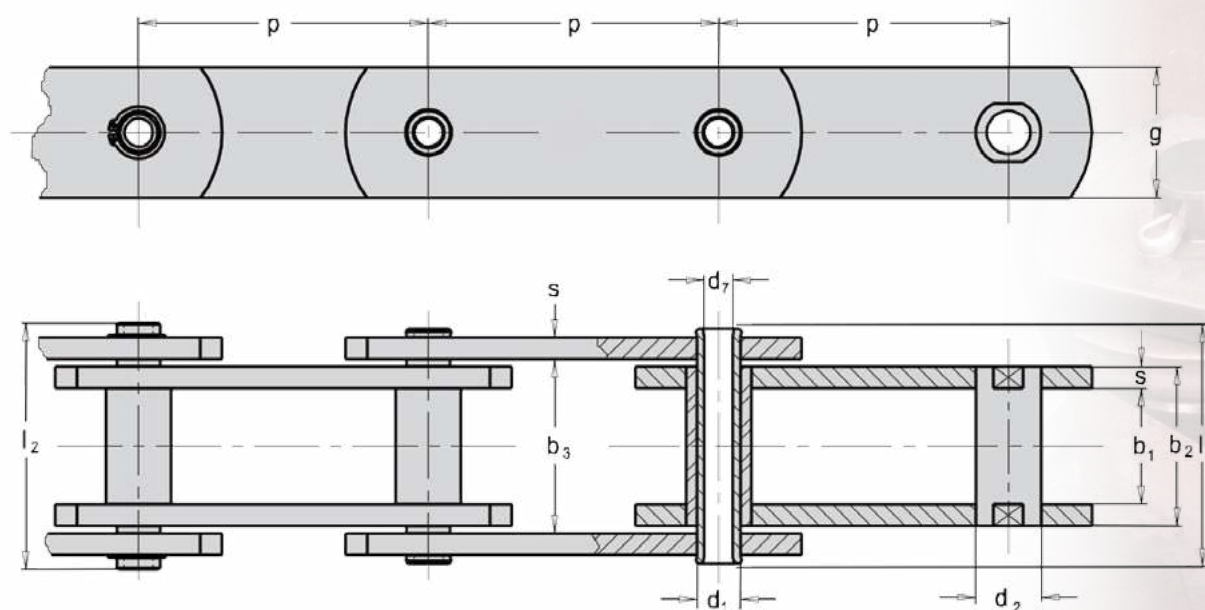
# CHAINES TYPE FV A AXES CREUX

## Hollow Pin FV Conveyor Chains

DIN 8165

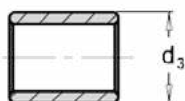
### Plan d'une chaîne à douilles Type B

Drawing of a bush chain Type B

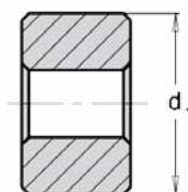


### Rouleaux

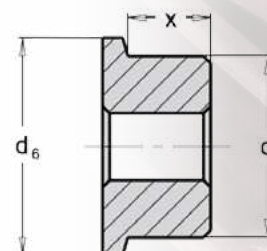
Rollers



**TYPE S**  
rouleau  
small roller



**TYPE P**  
galet lisse  
plain roller



**TYPE F**  
galet épaulé  
flanged roller

Ref*	p							b1	b2	b3	d1	d2	d3	d4	d5	d6	d7	x	l1	l2	g	s	Rr/Bl	
	mm																							mm
								min	max	min		B	S	P	F	F			max	max				min
**FVC 63	50	63	80	100	125	160	200	-	22	30,5	31,0	12	18	26	40	50	60	8,2	15,5	46	55	30	4	46
**FVC 90	50	63	80	100	125	160	200	250	25	35,5	36,0	14	20	30	48	63	73	10,2	18,5	53	62	35	5	55
FVC 112	80	100	125	160	200	250	315	-	30	42,5	43,0	16	22	32	55	72	87	11,2	22,0	63	72	40	6	78
FVC 140	80	100	125	160	200	250	315	400	35	47,5	48,0	18	26	36	60	80	95	12,2	26,0	68	80	45	6	105
FVC 180	-	100	125	160	200	250	315	400	45	61,5	62,5	20	30	42	70	100	120	14,3	35,0	86	100	50	8	118
FVC 250	-	-	125	160	200	250	315	400	55	72,0	73,0	26	36	50	80	125	145	18,3	42,0	98	114	60	8	206
FVC 315	-	-	125	160	200	250	315	400	65	86,0	87,0	30	42	60	90	140	170	20,3	50,0	117	133	70	10	290

\* Chaînes à axes et douilles méplâtés gamme série bois  
\* Chains with flattened pins and bushes - wood industry

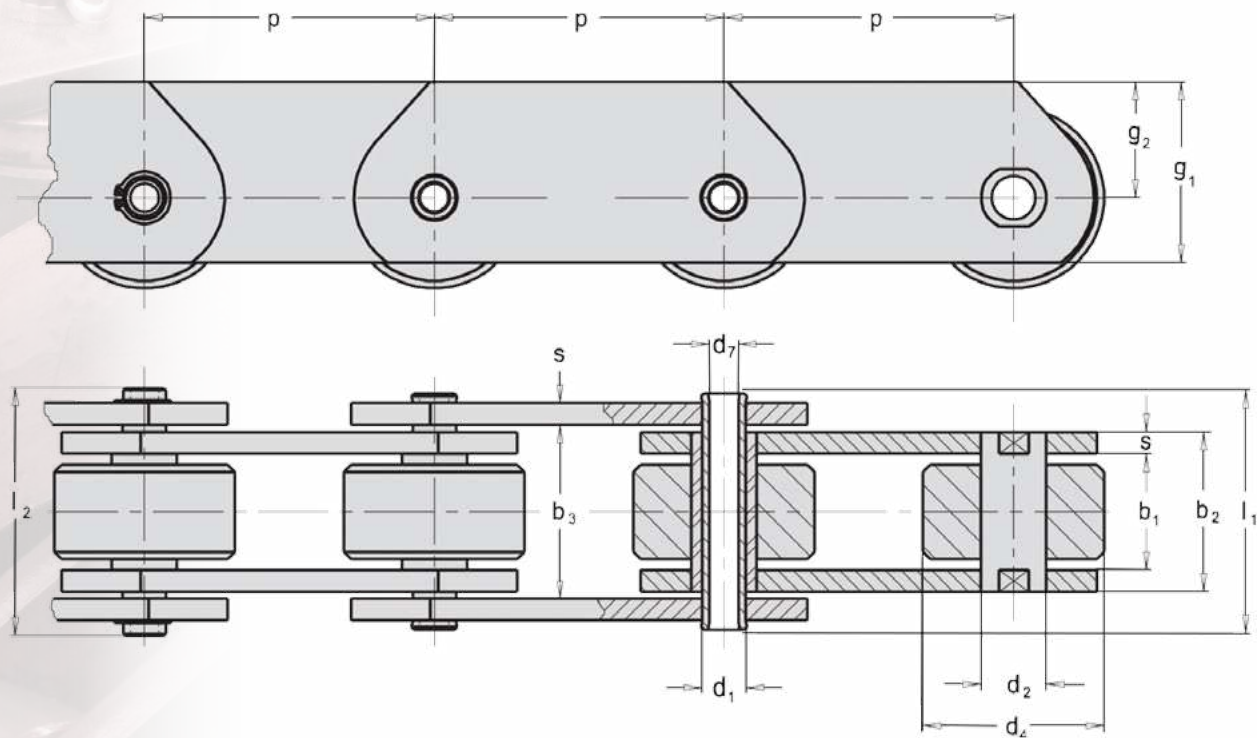
\*\* Axes non méplâtés  
\*\* Pins not flattened

# AXES CREUX & PLAQUES DEPORTEES FV Hollow Pin & Deep Link FV Conveyor Chains

DIN 8165

Plan d'une chaîne à galets lisses Type P

Drawing of a plain roller chain Type P



Ref*	p mm									b1	b2	b3	d1	d2	d4	d7	g1	g2	s	l1	l2	FB	Rr/Bl
	min	max	min	mm	mm	mm	mm	mm	mm	mm	mm	mm	mm	mm	mm	mm	mm	mm	mm	mm	mm	mm	mm
**FVC 63/D	63	50	63	80	100	125	160	200	-	22	30,5	31,0	12	18	40	8,2	40	25,0	4	46	55	46	55
**FVC 90/D	90	50	63	80	100	125	160	200	250	25	35,5	36,0	14	20	48	10,2	45	27,5	5	53	62	55	78
FVC 112/D	112	80	100	125	160	200	250	315	-	30	42,5	43,0	16	22	55	11,2	50	30,0	6	63	72	78	105
FVC 140/D	140	80	100	125	160	200	250	315	400	35	47,5	48,0	18	26	60	12,2	60	37,5	6	68	80	105	118
FVC 180/D	180	-	100	125	160	200	250	315	400	45	61,5	62,5	20	30	70	14,3	70	45,0	8	86	100	118	206
FVC 250/D	250	-	-	125	160	200	250	315	400	55	72,0	73,0	26	36	80	18,3	80	50,0	8	98	114	206	290
FVC 315/D	315	-	-	125	160	200	250	315	400	65	86,0	87,0	30	42	90	20,3	90	55,0	10	117	133	290	290

\* Chaînes à axes et douilles méplatés gamme série bois

\* Chains with flattened pins and bushes - wood industry

\*\* Axes non méplatés

\*\* Pins not flattened

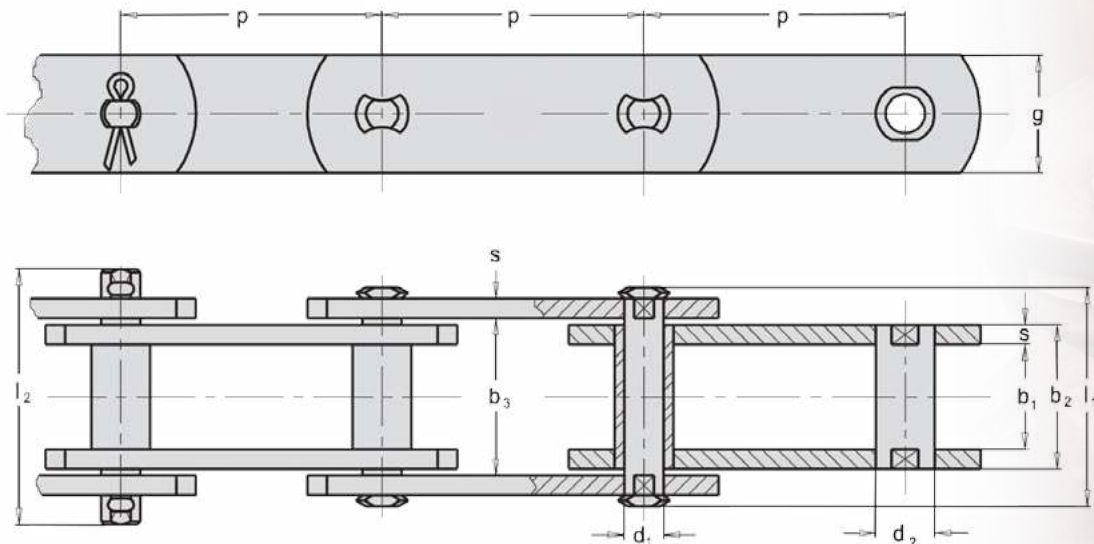
# CHAINES DE MANUTENTION TYPE ISO

## ISO Conveyor Chains

DIN 8165 & ISO 1977

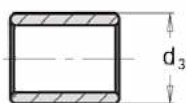
### Plan d'une chaîne à douilles Type B

Drawing of a bush chain Type B

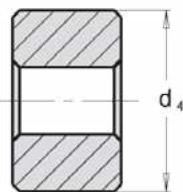


### Rouleaux - DIN 8169

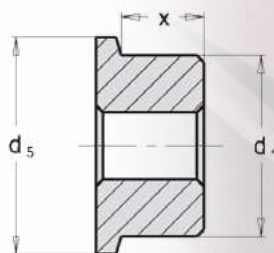
Rollers - to DIN 8169



**TYPE S**  
rouleau  
small roller



**TYPE P**  
galet lisse  
plain roller



**TYPE F**  
galet épaulé  
flanged roller

Type 1*	Type 2*	p mm								b1	b2	b3	d1	d2	d3	d4	d5	x	l1	l2	g	s	Rr/Bl
		min	max	min	mm	mm	mm	mm	mm	mm	mm	mm	mm	mm	mm	mm	mm	mm	mm	mm	mm	mm	mm
MV 56	MVS 56	63	80	100	125	160	200	250	24	33	33,3	10,0	15,0	21,0	42	50	17,5	52	72	30	4,0	56	
MV 80	MVS 80	80	100	125	160	200	250	315	28	39	39,4	12,0	18,0	25,0	50	60	20,5	62	86	35	5,0	80	
MV 112	MVS 112	80	100	125	160	200	250	315	32	45	45,5	15,0	21,0	30,0	60	70	23,0	73	101	40	6,0	112	
MV 160	MVS 160	100	125	160	200	250	315	400	37	52	52,5	18,0	25,0	36,0	70	85	26,5	85	117	50	7,0	160	
MV 224	MVS 224	125	160	200	250	315	400	500	43	60	60,6	21,0	30,0	42,0	85	100	31,0	98	134	60	8,0	224	
MV 315	MVS 315	160	200	250	315	400	500	630	48	70	70,7	25,0	36,0	50,0	100	120	34,0	112	154	70	10,0	315	
MV 450	MVS 450	-	200	250	315	400	500	630	56	82	82,8	30,0	42,0	60,0	120	140	37,0	135	185	80	12,0	450	
MV 630	MVS 630	-	200	250	315	400	500	630	66	96	97,0	36,0	50,0	70,0	140	170	45,0	147	200	100	14,0	630	
MV 900	MVS 900	-	-	250	315	400	500	630	78	112	113,0	44,0	60,0	85,0	170	210	54,0	167	220	120	16,0	900	

\* TYPE 1: Chaînes axes et douilles méplatés gamme série bois  
 \* TYPE 2: Chaînes axes et douilles méplatés soudés gamme série bois

\* TYPE 1: Chains with flattened pins and bushes - wood industry  
 \* TYPE 2: Chains with flattened and welded pins and bushes - wood industry



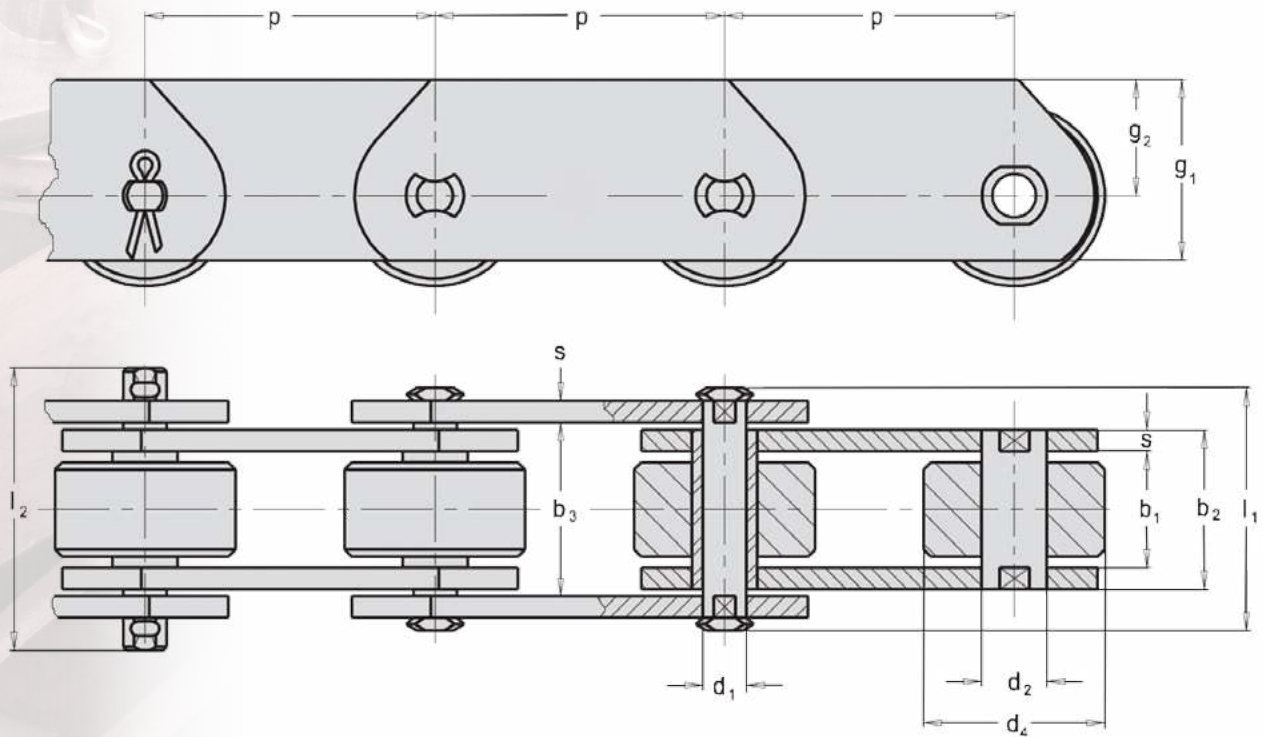
# CHAINES TYPE ISO A PLAQUES DEPORTEES

## Deep link ISO Conveyor Chains

DIN 8165 & ISO 1977

### Plan d'une chaîne à galets lisses Type P

Drawing of a plain roller chain Type P



Type 1*	Type 2*	p							b1 mm	b2 mm	b3 mm	d1 mm	d2 mm	d4 mm	g1 mm	g2 mm	s mm	l1 mm	l2 mm	Rr/Bl kN
		63	80	100	125	160	200	250												
MV 56/D	MVS 56/D	63	80	100	125	160	200	250	24	33	33,3	10,0	15,0	42	45	30,0	4,0	52	72	56
MV 80/D	MVS 80/D	80	100	125	160	200	250	315	28	39	39,4	12,0	18,0	50	50	32,5	5,0	62	86	80
MV 112/D	MVS 112/D	80	100	125	160	200	250	315	32	45	45,5	15,0	21,0	60	60	40,0	6,0	73	101	112
MV 160/D	MVS 160/D	100	125	160	200	250	315	400	37	52	52,5	18,0	25,0	70	70	45,0	7,0	85	117	160
MV 224/D	MVS 224/D	125	160	200	250	315	400	500	43	60	60,6	21,0	30,0	85	90	60,0	8,0	98	134	224
MV 315/D	MVS 315/D	160	200	250	315	400	500	630	48	70	70,7	25,0	36,0	100	100	65,0	10,0	112	154	315
MV 450/D	MVS 450/D	-	200	250	315	400	500	630	56	82	82,8	30,0	42,0	120	120	80,0	12,0	135	185	450
MV 630/D	MVS 630/D	-	200	250	315	400	500	630	66	96	97,0	36,0	50,0	140	140	90,0	14,0	147	200	630
MV 900/D	MVS 900/D	-	-	250	315	400	500	630	78	112	113,0	44,0	60,0	170	180	120	16,0	167	220	900

\* TYPE 1: Chaînes axes et douilles méplatés gamme série bois

\* TYPE 2: Chaînes axes et douilles méplatés soudés gamme série bois

\* TYPE 1: Chains with flattened pins and bushes - wood industry

\* TYPE 2: Chains with flattened and welded pins and bushes - wood industry

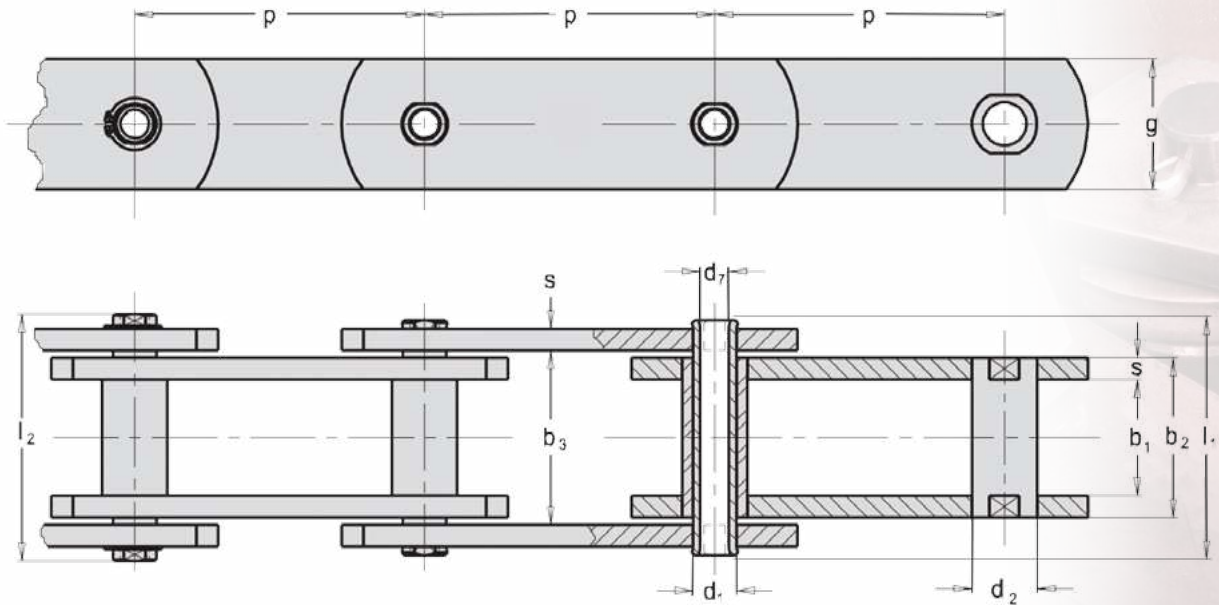


# CHAINES TYPE ISO A AXES CREUX

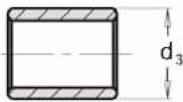
## Hollow Pin ISO Conveyor Chains

DIN 8167 & ISO 1977

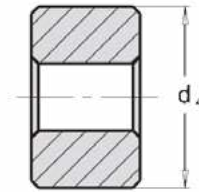
Plan d'une chaîne à douilles Type B  
Drawing of a bush chain Type B



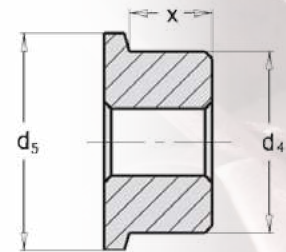
Rouleaux - DIN 8169  
Rollers - to DIN 8169



**TYPE S**  
rouleau  
small roller



**TYPE P**  
galet lisse  
plain roller



**TYPE F**  
galet épaulé  
flanged roller

Ref*	p							b1	b2	b3	d1	d2	d3	d4	d5	d7	x	l1	l2	g	s	Rr/BL													
	mm																						mm	mm	mm	mm	mm	mm	mm	mm	mm	mm	mm	mm	mm
	min	max	min	B	S	P	F																max	max	min	min									
MVC 56	63	80	100	125	160	200	250	24	33	33,3	15,5	21,0	30,0	50	60	10,2	17,5	48	54	35	4,0	56													
MVC 112	80	100	125	160	200	250	315	32	45	45,5	22,0	29,0	42,0	70	85	14,3	23,0	67	73	50	6,0	112													
MVC 224	125	160	200	250	315	400	500	43	60	60,6	31,0	41,0	60,0	100	120	20,3	31,0	90	96	70	8,0	224													

\* Chaînes à axes et douilles méplatés gamme série bois

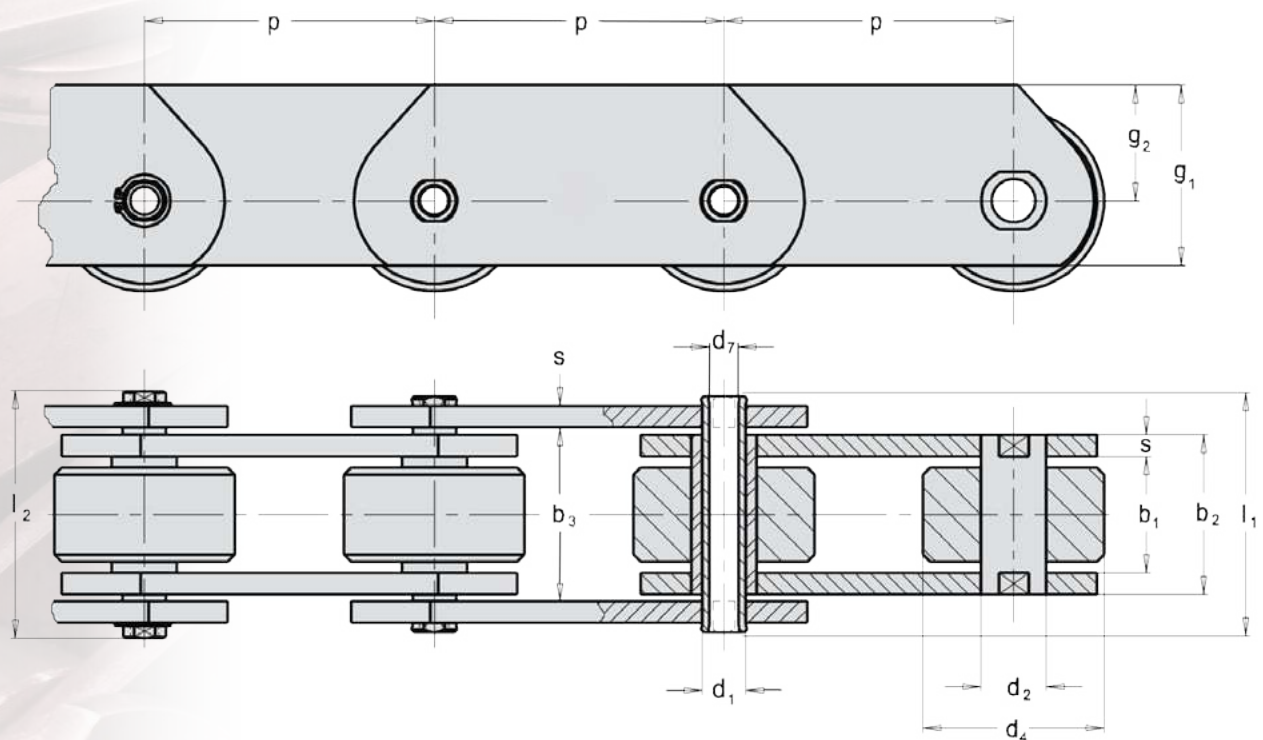
\* Chains with flattened pins and bushes - wood industry

# AXES CREUX & PLAQUES DEPORTEES ISO Hollow Pin & Deep Link ISO Chains

DIN 8168

Plan d'une chaîne à galets lisses Type P

*Drawing of a plain roller chain Type P*



Ref <sup>*</sup>	p							b1	b2	b3	d1	d2	d4	d7	g1	g2	s	l1	l2	Rr/Bl
	mm							mm	mm	mm	mm	mm	mm	mm	mm	mm	mm	mm	mm	mm
								min	max	min		B	P					max	max	min
MVC 56/D	63	80	100	125	160	200	250	24	33	33,3	15,5	21,0	50	10,2	50	32,5	4,0	48	54	56
MVC 112/D	80	100	125	160	200	250	315	32	45	45,5	22,0	29,0	70	14,3	70	45,0	6,0	67	73	112
MVC 224/D	125	160	200	250	315	400	500	43	60	60,6	31,0	41,0	100	20,3	100	65,0	8,0	90	96	224

\* Chaînes à axes et douilles méplatés gamme série bois

\* Chains with flattened pins and bushes - wood industry



Recommandé par  
**MICHAUD CHAILLY**  
www.michaud-chailly.fr  
► N° Indigo 0 825 002 555



# NOTES

---

---

---

---

---

---

---

---

---

---

---

---

---

---

---

---

---

---

---

---

---

---

---

**DES PRODUITS HAUT DE GAMME  
GARANTS DE VOTRE PERFORMANCE**

*High quality designs to deliver improved processing*

**UNE LARGE GAMME  
A VOTRE SERVICE**

*A wide offer to satisfy your needs*

**sedis** 

**DES REPONSES SUR MESURE**

*Tailored solutions  
for all your specifications*

**UNE EQUIPE D'EXPERTS  
A VOTRE ECOUTE**

*A team with global know-how  
for all sectors*

Recommandé par  
**MICHAUD CHAILLY®**  
[www.michaud-chailly.fr](http://www.michaud-chailly.fr)  
N° Indigo 0 825 002 555

**AF  
AQ**  
ISO 9001  
VERSION 2000



*Parcs d'attractions*  
Theme Parks



*Traitement Fluvial*  
River Cleaning



*Travaux publics*  
Public Works



*Industrie du Bois*  
Wood Industry



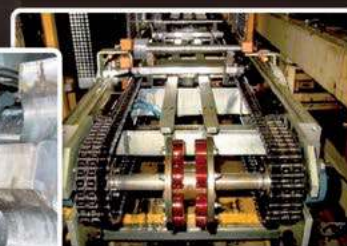
*Cimenteries*  
Cement Industry



*Traitement des Déchets*  
Waste Treatment



*Barrières anti-houle*  
Tidal Barriers



*Automobile*  
Automotive Industry



*Escaliers Mécaniques*  
Escalators



*Barrages*  
Dams



*Abattoirs*  
Abattoirs



*Sucreries*  
Sugar Industry



*Papeteries*  
Paper Industry



*Agroalimentaire*  
Food Industry



*Sidérurgie*  
Steel Industry

35, rue des Bas-Trévois - CS 90104 - 10003 TROYES, France  
Tél. +33 (0) 3 25 76 29 50 - Fax. +33 (0) 3 25 80 31 62  
email: [contact@sedis.com](mailto:contact@sedis.com) - Web: [www.sedis.com](http://www.sedis.com)